

MMD Brass Anchor



Features

- Corrosion resistant
- For light applications indoor and outdoor
- Face fixing

Applications

under-constructions, rails

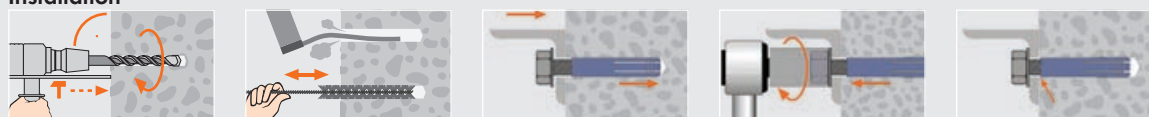


Technical Data

	Concrete C20/25 tension load (kN)	Brick tension load (kN)	Min. distance betw. anchors (s _{min}) mm	Min. edge distance (c _{min}) mm	Min. thickness of found. (h _{min}) mm
M4	0.5	0.4	50	30	25
M5	0.7	0.55	50	35	30
M6	0.85	0.7	60	40	35
M8	1.5	1.2	65	45	40
M10	2.5	1.6	70	50	45
M12	3.5	2.0	75	55	50
M16	3.9	3.25	90	65	60

Safety factor 3 / 1 kN \pm 100 kg

Installation



MMD Brass Anchor



Article code	Internal thread	Thread length mm	Plug and drill \varnothing mm	Drilling depth mm	Box contents FS	Outer carton SK
1730004	M4	11	5	20	100 01	2400 22
1730005	M5	14	6	25	100 01	2400 22
1730006	M6	15	8	28	100 01	2400 22
1730008	M8	18	10	35	100 11	1200 22
1730010	M10	22	12	40	100 11	1200 22
1730012	M12	21	15	45	50 11	600 22
1730016	M16	25	20	53	25 11	300 22

MHDA Hollow Ceiling Anchor

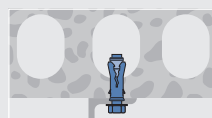


Features

- Suitable for screws or bolts with metric thread
- Zinc plated > 5 μ m
- Face fixing

Applications

pipes, ventilation systems, cable trays, under-constructions, gratings, gates



Technical Data

	Concrete C20/25 tension load (kN) thickness of found. \geq 25mm	Concrete C20/25 tension load (kN) thickness of found. \geq 30mm	Concrete C20/25 tension load (kN) thickness of found. \geq 40mm	Distance betw. anchors (s) mm	Edge distance (c) mm	Tighten torque (Nm)
M6	0.7	0.90	2.0	300	150	10
M8	0.7	0.90	2.0	300	150	10
M10	-	1.2	3.0	300	150	20

Single fixing / Safety factor 3 / 1 kN \pm 100 kg

Installation



MHDA Hollow Ceiling Anchor



Article code	Internal thread	Thread length mm	Plug and drill \varnothing mm	Drilling depth mm	Box contents FS	Outer carton SK
1300006	M6	11	10	50	100 11	1200 22
1300008	M8	14	12	60	50 11	600 22
1300010	M10	19	16	65	25 11	300 22