

# MNA Hammer Screw



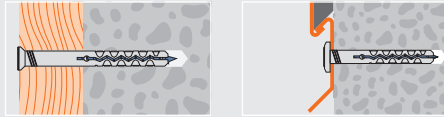
## Features

- Quick and simple installation
- Plug made from high-quality polyamide PA6
- Through fixing
- Indoor (zinc plated) and outdoor (stainless steel) applications



## Applications

wooden constructions, skirtings, profiles, frames

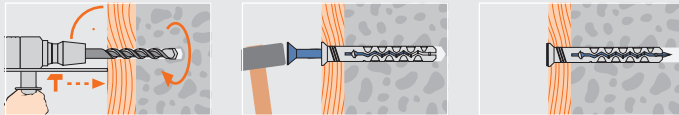


## Technical Data

	Concrete C20/25 tension load (kN)	Brick tension load (kN)	Sandstone tension load (kN)
MNA 5	0.25	0.2	0.15
MNA 6	0.3	0.25	0.2
MNA 8	0.4	0.3	0.25
MNA 10	0.5	0.4	0.3

Safety factor of 5 is included / 1 kN ≈ 100 kg

## Installation



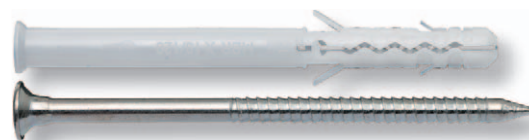
Article code	Plug and drill ∅ mm $d_{nom} = d_0$	Length mm L	Collar ∅ mm $d_k$	Usable length mm $t_{fix}$	Drive	Box content	Outer carton	Quantity per pallet
1122502S	5	25	7	2	PZ2	100 <sup>11</sup> 2400 <sup>32</sup>	144000	
1122503S	5	30	7	5	PZ2	100 <sup>11</sup> 2400 <sup>32</sup>	144000	
1122504S	5	40	7	15	PZ2	100 <sup>11</sup> 2400 <sup>32</sup>	144000	
1122505S	5	50	7	25	PZ2	100 <sup>11</sup> 2400 <sup>32</sup>	144000	
1122603S	6	35	9	5	PZ2	100 <sup>21</sup> 1800 <sup>32</sup>	108000	
1122604S	6	40	9	10	PZ2	100 <sup>21</sup> 1800 <sup>32</sup>	108000	
1122605S	6	50	9	20	PZ2	100 <sup>21</sup> 1800 <sup>32</sup>	108000	
1122606S	6	60	9	30	PZ2	100 <sup>31</sup> 1200 <sup>32</sup>	72000	
1122607S	6	70	9	40	PZ2	100 <sup>31</sup> 1200 <sup>32</sup>	72000	
1122608S	6	80	9	50	PZ2	100 <sup>31</sup> 1200 <sup>32</sup>	72000	
1122805S	8	50	12	10	PZ3	100 <sup>41</sup> 900 <sup>32</sup>	54000	
1122806S	8	60	12	20	PZ3	100 <sup>41</sup> 900 <sup>32</sup>	54000	
1122808S	8	80	12	40	PZ3	100 <sup>51</sup> 600 <sup>32</sup>	36000	
1122810S	8	100	12	60	PZ3	100 <sup>51</sup> 600 <sup>32</sup>	36000	
1122812S	8	120	12	80	PZ3	100 <sup>51</sup> 600 <sup>32</sup>	36000	
1122814S	8	140	12	100	PZ3	100 <sup>51</sup> 600 <sup>32</sup>	36000	

## MNA-S Hammer Screw with countersunk collar



Article code	Plug and drill ∅ mm $d_{nom} = d_0$	Length mm L	Collar ∅ mm $d_k$	Usable length mm $t_{fix}$	Drive	Box content	Outer carton	Quantity per pallet
11229081S	10	80	13	30	PZ3	50 <sup>31</sup> 600 <sup>32</sup>	36000	
11229101S	10	100	13	50	PZ3	50 <sup>51</sup> 300 <sup>32</sup>	18000	
11229121S	10	120	13	70	PZ3	50 <sup>51</sup> 300 <sup>32</sup>	18000	
11229141S	10	140	13	90	PZ3	50 <sup>51</sup> 300 <sup>32</sup>	18000	
11229161S	10	160	13	110	PZ3	50 <sup>51</sup> 300 <sup>32</sup>	18000	

## MNA-S Hammer Screw with countersunk collar, not pre-assembled



Not pre-assembled

Article code	Plug and drill ∅ mm $d_{nom} = d_0$	Length mm L	Collar ∅ mm $d_k$	Usable length mm $t_{fix}$	Drive	Box content	Outer carton	Quantity per pallet
1122502Z	5	25	8	2	PZ2	100 <sup>11</sup> 2400 <sup>32</sup>	144000	
1122503Z	5	30	8	5	PZ2	100 <sup>11</sup> 2400 <sup>32</sup>	144000	
1122504Z	5	40	8	15	PZ2	100 <sup>11</sup> 2400 <sup>32</sup>	144000	
1122505Z	5	50	8	25	PZ2	100 <sup>11</sup> 2400 <sup>32</sup>	144000	
1122603Z	6	35	12	5	PZ2	100 <sup>21</sup> 1800 <sup>32</sup>	108000	
1122604Z	6	40	12	10	PZ2	100 <sup>21</sup> 1800 <sup>32</sup>	108000	
1122605Z	6	50	12	20	PZ2	100 <sup>21</sup> 1800 <sup>32</sup>	108000	
1122606Z	6	60	12	30	PZ2	100 <sup>31</sup> 1200 <sup>32</sup>	72000	
1122607Z	6	70	12	40	PZ2	100 <sup>31</sup> 1200 <sup>32</sup>	72000	
1122608Z	6	80	12	50	PZ2	100 <sup>31</sup> 1200 <sup>32</sup>	72000	
1122805Z	8	50	15	10	PZ3	100 <sup>41</sup> 900 <sup>32</sup>	54000	
1122806Z	8	60	15	20	PZ3	100 <sup>41</sup> 900 <sup>32</sup>	54000	
1122808Z	8	80	15	40	PZ3	100 <sup>51</sup> 600 <sup>32</sup>	36000	
1122810Z	8	100	15	60	PZ3	100 <sup>51</sup> 600 <sup>32</sup>	36000	
1122812Z	8	120	15	80	PZ3	100 <sup>51</sup> 600 <sup>32</sup>	36000	
1122814Z	8	140	15	100	PZ3	100 <sup>51</sup> 600 <sup>32</sup>	36000	

## MNA-Z Hammer Screw with cylindrical collar

