

# MQL Universal Nylon Frame Plug



## Features

- ETAG 020 - Approved for multiple use in concrete and masonry for non-structural applications
- Fire resistance test certification F90 for fastening of façade systems
- Universal use
- Increased load capacity due to 4 expansion zones
- Setting depth of 70mm results in higher loadings
- Knot forming leads to high resistance in cavities
- Longer plugs with reinforced shank
- Made from high-quality polyamide PA6
- Through fixing
- Indoor (zinc plated) and outdoor (stainless steel) applications



## Applications

façade and roof substructures, ventilated façades, fixing for insulation, substructures, profiles

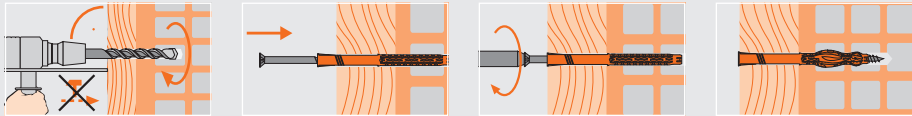


## Technical Data

|        | Non-cracked concrete C20/25 tension load (kN) | Cracked concrete C20/25 tension load (kN) | Brick tension load (kN) | Sandstone tension load (kN) | Perforated Brick tension load (kN) | Perforated Brick tension load (kN) | Lightweight Concrete tension load (kN) | Aerated Concrete tension load (kN) | Bending moment (Nm) galv. steel | Bending moment (Nm) stainl. steel |
|--------|---|---|-------------------------|-----------------------------|------------------------------------|------------------------------------|--|------------------------------------|---------------------------------|-----------------------------------|
| MQL 8  | <sup>1) 6)</sup> 1.8                          | -   | -                       | -                           | <sup>2) 6)</sup> 0.9               | -                                  | <sup>2) 6)</sup> 0.3                   | <sup>2) 6)</sup> 0.4               | -                               | -                                 |
| MQL 10 | <sup>1) 6)</sup> 2.0                          | <sup>5)</sup> 1.0                         | <sup>5)</sup> 0.9       | <sup>5)</sup> 0.7           | <sup>2) 6)</sup> 1.2               | <sup>5)</sup> 0.6                  | <sup>2) 6)</sup> 0.4                   | <sup>2) 6)</sup> 0.5               | <sup>5)</sup> 9.2               | <sup>5)</sup> 8.6                 |

Values only valid when using Mungo safety screws / 1 kN = 100 kg / 1) Safety factor of 3 is included / 2) Safety factor of 3.5 is included / 5) ETA / 6) Mungo lab tested

## Installation



| Article code           | Plug and drill $\varnothing$ mm<br>$d_{nom} = d_g$ | Length mm<br>L | Usable length mm<br>$t_{fix}$ | Screw $\varnothing$ mm<br>$d_s$ | Screw length mm<br>$L_s$ | Drive | Box content<br>FS | Outer carton<br>SK | Quantity per pallet |
|------------------------|--|----------------|-------------------------------|---------------------------------|--------------------------|-------|-------------------|--------------------|---------------------|
| <sup>11)</sup> 1060100 | 8  | 80             | 10                            | 6                               | 85                       | T30   | 100 SK            | 600 SK             | 14400               |
| <sup>11)</sup> 1060101 | 8  | 100            | 30                            | 6                               | 105                      | T30   | 100 SK            | 600 SK             | 14400               |
| <sup>11)</sup> 1060102 | 8  | 120            | 50                            | 6                               | 125                      | T30   | 100 SK            | 600 SK             | 14400               |
| <sup>11)</sup> 1060104 | 8  | 140            | 70                            | 6                               | 145                      | T30   | 100 SK            | 600 SK             | 14400               |
| <sup>11)</sup> 1060106 | 8  | 160            | 90                            | 6                               | 165                      | T30   | 50 SK             | 300 SK             | 7200                |
| 1060108                | 10   | 80             | 10                            | 7                               | 85                       | T40   | 100 SK            | 600 SK             | 14400               |
| 1060110                | 10   | 100            | 30                            | 7                               | 105                      | T40   | 50 SK             | 300 SK             | 7200                |
| 1060112                | 10   | 120            | 50                            | 7                               | 125                      | T40   | 50 SK             | 300 SK             | 7200                |
| 1060114                | 10   | 140            | 70                            | 7                               | 145                      | T40   | 50 SK             | 300 SK             | 7200                |
| 1060116                | 10   | 160            | 90                            | 7                               | 165                      | T40   | 50 SK             | 300 SK             | 7200                |
| 1060118                | 10   | 180            | 110                           | 7                               | 185                      | T40   | 50 SK             | 300 SK             | 7200                |
| 1060120                | 10   | 200            | 130                           | 7                               | 205                      | T40   | 50 SK             | 300 SK             | 7200                |
| <sup>17)</sup> 1060124 | 10   | 240            | 170                           | 7                               | 245                      | T40   | 25                | -                  | -                   |
| <sup>17)</sup> 1060128 | 10   | 280            | 210                           | 7                               | 285                      | T40   | 25                | -                  | -                   |
| <sup>17)</sup> 1060130 | 10   | 300            | 230                           | 7                               | 305                      | T40   | 25                | -                  | -                   |

Setting depth of 70mm

<sup>17)</sup> Pre-assembled

<sup>11)</sup> Not part of the approval

| Article code           | Plug and drill $\varnothing$ mm<br>$d_{nom} = d_g$ | Length mm<br>L | Usable length mm<br>$t_{fix}$ | Screw $\varnothing$ mm<br>$d_s$ | Screw length mm<br>$L_s$ | Wrench size<br>SW | Box content<br>FS | Outer carton<br>SK | Quantity per pallet |
|------------------------|--|----------------|-------------------------------|---------------------------------|--------------------------|-------------------|-------------------|--------------------|---------------------|
| 1060208                | 10   | 80             | 10                            | 7                               | 85                       | 13                | 100 SK            | 600 SK             | 14400               |
| 1060210                | 10   | 100            | 30                            | 7                               | 105                      | 13                | 50 SK             | 300 SK             | 7200                |
| 1060212                | 10   | 120            | 50                            | 7                               | 125                      | 13                | 50 SK             | 300 SK             | 7200                |
| 1060214                | 10   | 140            | 70                            | 7                               | 145                      | 13                | 50 SK             | 300 SK             | 7200                |
| 1060216                | 10   | 160            | 90                            | 7                               | 165                      | 13                | 50 SK             | 300 SK             | 7200                |
| 1060218                | 10   | 180            | 110                           | 7                               | 185                      | 13                | 50 SK             | 300 SK             | 7200                |
| 1060220                | 10   | 200            | 130                           | 7                               | 205                      | 13                | 50 SK             | 300 SK             | 7200                |
| <sup>17)</sup> 1060224 | 10   | 240            | 170                           | 7                               | 245                      | 13                | 25                | -                  | -                   |
| <sup>17)</sup> 1060228 | 10   | 280            | 210                           | 7                               | 285                      | 13                | 25                | -                  | -                   |
| <sup>17)</sup> 1060230 | 10   | 300            | 230                           | 7                               | 305                      | 13                | 25                | -                  | -                   |

Stainless steel A4 on request

Setting depth of 70mm

<sup>17)</sup> Pre-assembled

## MQL-ST Universal Nylon Frame Plug with screw T30/T40



## MQL-SS Universal Nylon Frame Plug with hexagon screw

