

MSS Shield Anchor

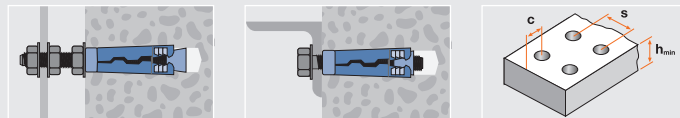


Features

- Torque controlled expansion
- Zinc plated > 5µm
- Pre installation
- Indoor applications

Applications

pipes, steel constructions

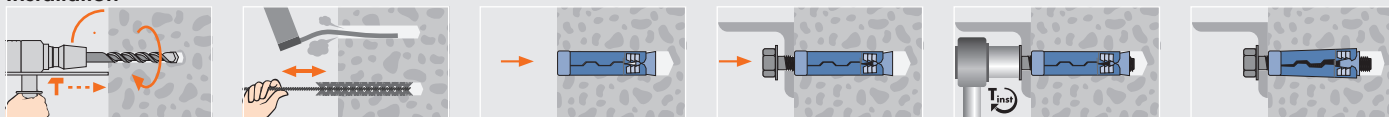


Technical Data

	Concrete C20/25 tension load (kN)	Concrete C20/25 shear load (kN)	Bending moment (Nm)	Distance betw. anchors mm s	Distance to edge tension load mm c	Distance to edge shear load mm c	Minimum thickness of concrete member mm h _{min}	Installation torque concrete (Nm) T _{inst}	Wrench size SW
M6	2.7	6.8	9.4	120	80	100	70	6.5	10
M8	4.8	8.7	17.1	150	100	120	80	15	13
M10	6.2	13.7	34.2	180	120	160	100	27	17
M12	9.7	19.9	60	250	160	180	120	50	19
M16	13.0	25.6	113	290	190	260	190	120	24

Safety factor: breakage of concrete of 3 is included / of steel of 2.2 is included / The technical data is only valid for single fixings without consideration of edge and anchor distances / Hexagon screw and threaded bolt = steel quality 8.8 / 1 kN ≈ 100 kg

Installation



MSS Shield Anchor



Article code	Internal thread d	Drill Ø mm d ₀	Clearance hole in fixture mm d ₁	Length mm L	Drilling depth mm h ₀	Box content FS	Outer carton SK
1240604	M6	11	7	45	50	50 ¹¹	600 ²²
1240805	M8	13	9	50	55	50 ²¹	450 ²²
1241006	M10	16	12	60	65	50 ³¹	300 ²²
1241207	M12	18	14	75	80	25 ³¹	150 ²²
1241611	M16	25	18	115	120	10 ²¹	90 ²²