

MMM Metal Frame Anchor, Multi

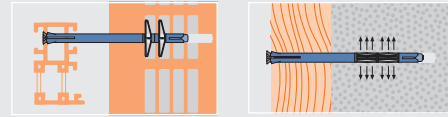


Features

- Zinc coated for optimum corrosion prevention
- Expansion cone is inactivated by the sleeve
- Without hammer drill in perforated brick
- Zinc plated > 5µm
- Face fixing or through fixing

Applications

windows, profiles, under-constructions, frames

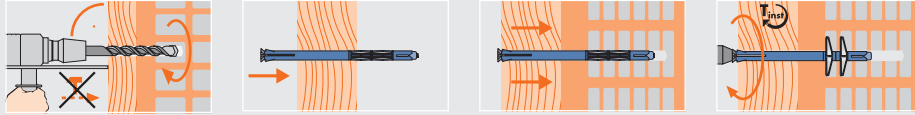


Technical Data

MMM	Concrete C20/25 - C50/60 tension load (kN)	Brick tension load (kN)	Perforated Brick tension load (kN)	Lightweight Concrete tension load (kN)	Tighten torque (Nm)
	0.5	0.4	0.3	0.2	8

Safety factor 5 / 1 kN ± 100 kg

Installation



Article code	Plug and drill Ø mm	Length mm	Drilling depth mm	Usable length mm	Setting depth min. mm	Drive	Box contents
1210112	10	110	80	45	65	PZ3	100
1210132	10	130	80	65	65	PZ3	100
1210152	10	150	80	85	65	PZ3	100
1210182	10	180	80	115	65	PZ3	100
1210202	10	200	80	135	65	PZ3	100

MMM Metal Frame Anchor, Multi



MHN Hammer Nail

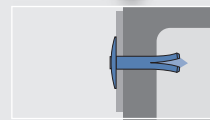


Features

- Easily installed with hammer
- Rivet from aluminium alloy with stainless steel A2 nail
- Through fixing

Applications

claddings, profiles

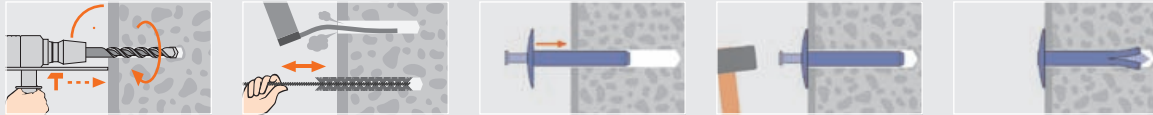


Technical Data

MHN	Concrete C20/25 tension load (kN)	Brick tension load (kN)	Setting depth min. mm	Drilling depth mm
	0.35	0.35	15	18

Safety factor 3 / 1 kN ± 100 kg

Installation



Article code	Nail Ø mm	Length mm	Drilling hole Ø mm	Head Ø mm	Usable length metal/metal mm	Usable length metal/concrete mm	Box contents [FS]	Outer carton [SK]
5904816	4.8	16	5	15	8-9	1	200 [11]	4800 [32]
5904820	4.8	20	5	15	12-13	5	200 [11]	4800 [32]
5904825	4.8	26	5	15	18-19	11	200 [11]	4800 [32]
5904830	4.8	30	5	15	22-23	15	200 [11]	2400 [22]
5904835	4.8	35	5	15	27-28	20	200 [31]	2400 [32]
5904840	4.8	40	5	15	32-33	25	200 [31]	2400 [32]
5904845	4.8	46	5	15	38-39	31	200 [31]	2400 [32]
5904850	4.8	50	5	15	42-43	35	200 [31]	2400 [32]

MHN Hammer Nail in aluminium/stainless steel

