

# MMS Metal Frame Anchor, Standard

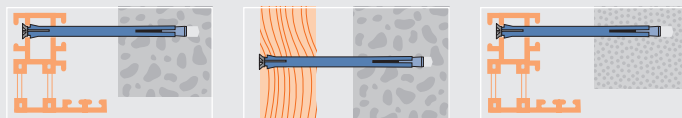


### Features

- Zinc coated for optimum corrosion prevention
- Expansion cone is incaptivated by the sleeve
- Applications in solid materials
- Zinc plated > 5µm
- Through fixing

### Applications

windows, under-constructions, frames

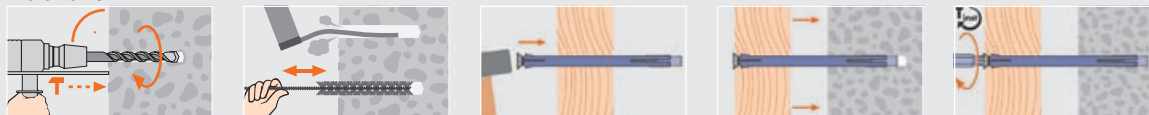


### Technical Data

	Concrete C20/25 - C50/60 tension load (kN)	Brick tension load (kN)	Lightweight Concrete tension load (kN)	Tighten torque (Nm)
MMS 8	0.75	0.5	-	5
MMS 10	1.0	0.5	0.1	8

Safety factor 5 / 1 kN  $\approx$  100 kg

### Installation



## MMS Metal Frame Anchor, Standard



Article code	Plug and drill $\varnothing$ mm	Length mm	Drilling depth mm	Usable length mm	Drive	Box contents
1208071	8	70	45	40	PZ2	100
1208091	8	90	45	60	PZ2	100
1208111	8	110	45	80	PZ2	100
1208131	8	130	45	100	PZ2	100
1210071	10	70	55	30	PZ3	100
1210091	10	90	55	50	PZ3	100
1210111	10	110	55	70	PZ3	100
1210131	10	130	55	90	PZ3	100
1210151	10	150	55	110	PZ3	100
1210181	10	180	55	140	PZ3	100
1210201	10	200	55	160	PZ3	100

## AKG End Cap for MMS $\varnothing$ 8mm



Article code	Shape	Colour	RAL	$\varnothing$ mm	Box contents FS	Outer carton SK
1121026	overlap	white	9010	8	100 $\frac{1}{2}$	3600 $\frac{22}{22}$
1121052	overlap	dark brown	8017	8	100 $\frac{1}{2}$	3600 $\frac{22}{22}$

## AKG End Cap for MMS/MMM $\varnothing$ 10mm



Article code	Shape	Colour	RAL	$\varnothing$ mm	Box contents FS	Outer carton SK
1121023	flat	white	9010	10	100 $\frac{1}{2}$	3600 $\frac{22}{22}$
1121034	flat	light brown	1001	10	100 $\frac{1}{2}$	3600 $\frac{22}{22}$
1121043	flat	dark brown	8017	10	100 $\frac{1}{2}$	3600 $\frac{22}{22}$
1121083	flat	black	9005	10	100 $\frac{1}{2}$	3600 $\frac{22}{22}$
1121028	overlap	white	9010	10	100 $\frac{1}{2}$	3600 $\frac{22}{22}$
1121036	overlap	light brown	1001	10	100 $\frac{1}{2}$	3600 $\frac{22}{22}$
1121053	overlap	dark brown	8017	10	100 $\frac{1}{2}$	3600 $\frac{22}{22}$
1121086	overlap	black	9005	10	100 $\frac{1}{2}$	3600 $\frac{22}{22}$