



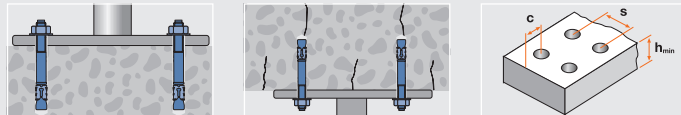
Features

- European Technical Approval Option 1 for cracked and non-cracked concrete
- Fire resistance up to F120 is part of the approval
- The anchor may also be used under seismic influence for performance category C1 + C2
- Small edge and spacing distances
- Zinc plated > 10µm
- Pre installation or through fixing
- Indoor applications



Applications

steel constructions, profiles, machines, substructures, high-racks, cable trays

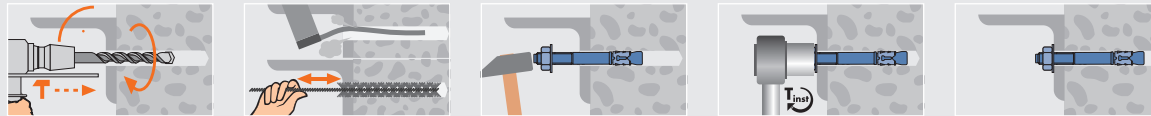


Technical Data

	Non-cracked concrete C20/25 tension load (kN)	Cracked concrete C20/25 tension load (kN)	Concrete C20/25 shear load (kN) $c \geq 10x_{ef}$	Bending moment (Nm)	Distance betw. anchors mm	Edge distance mm	Min. distance betw. anchors/at edge distance mm s_{min}/c	Min. edge distance/at distance betw. anchors mm c_{min}/s	Minimum thickness of concrete member mm h_{min}	Installation torque (Nm) T_{inst}	Wrench size SW
M8	4.3	2.9	6.2	16	288	144	50/65	50/75	100	20	13
M10	7.6	5.7	11.4	32	360	180	60/80	60/120	120	40	17
M12	9.5	7.6	16.2	56	432	216	70/90	70/150	150	60	19
M16	16.7	9.5	31.4	143	516	258	80/120	85/170	170	120	24

The partial safety factors of the resistances as well as a partial safety factor of the load of $\gamma_F = 1.4$ are considered / The technical data is only valid for single fixings without consideration of edge and anchor distances / $1 \text{ kN} \approx 100 \text{ kg}$

Installation



Article code	Plug and drill Ø mm $d_{nom} = d_0$	Length mm L	Drilling depth mm h_0	Usable length mm t_{fix}	Effective anchorage depth mm h_{ef}	Box content FS	Outer carton SK	Quantity per pallet
3600806	8	68	70	4	48	100 91	600 22	36000
3600807	8	75	70	10	48	100 41	300 12	18000
3600809	8	90	70	25	48	100 51	300 22	18000
3600811	8	115	70	50	48	100 51	300 22	18000
3600813	8	135	70	70	48	50 41	150 12	9000
3600816	8	165	70	100	48	50 51	150 22	9000
3601009	10	90	80	10	60	100 51	300 22	18000
3601010	10	105	80	25	60	50 51	150 22	9000
3601011	10	115	80	35	60	50 51	150 22	9000
3601013	10	135	80	55	60	50 51	150 22	9000
3601015	10	155	80	75	60	50 51	150 22	9000
3601018	10	185	80	105	60	25 51	75 22	4500
3601211	12	110	100	10	72	50 51	150 22	9000
3601212	12	120	100	20	72	50 51	150 22	9000
3601214	12	145	100	45	72	25 41	75 12	4500
3601217	12	170	100	70	72	50 51	150 22	9000
3601220	12	200	100	100	72	25 51	75 22	4500
3601613	16	130	115	10	86	25 51	75 22	3600
3601615	16	150	115	30	86	25 51	75 22	3600
3601618	16	185	115	60	86	25 51	75 22	3600
3601622	16	220	115	100	86	25 51	75 22	3600

m1t Throughbolt with washer DIN 125A

