

# MN Nylon Plug



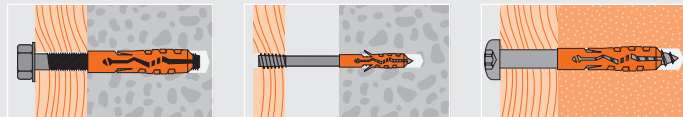
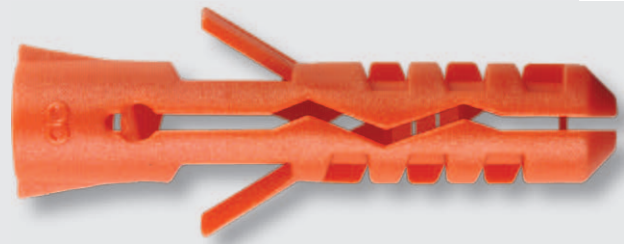
## Features

- Can be used with wood screws, chipboard screws and metric screws
- Suitable for use in most kinds of building materials, especially in solid building materials
- Made from high-quality polyamide PA6
- Pre installation or through fixing
- Indoor and outdoor applications



## Applications

pictures, lamps, holders, profiles, substructures, electric switches, rails

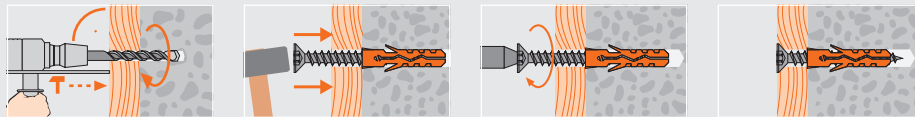


## Technical Data

		Concrete C20/25 tension load (kN)	Brick tension load (kN)	Lightweight Concrete tension load (kN)
	MN 4	0.25	0.1	0.02
	MN 5	0.35	0.2	0.04
	MN 6	0.6	0.4	0.06
	MN 7	0.7	0.55	0.07
	MN 8	0.85	0.6	0.09
	MN 10	1.4	0.8	0.2
	MN 12	1.8	1.0	0.4
	MN 14	2.6	1.3	0.5
	MN 15	2.9	1.5	0.6
	MN 16	3.2	1.7	0.6
	MN 20	5.2	1.9	1.0

Reached with max. diameter wood screw / Safety factor of 5 is included / 1 kN ≈ 100 kg

## Installation



Article code	Plug and drill $\varnothing$ mm $d_{nom} = d_0$	Length mm L	Screwtype wood/chipboard $\varnothing$ mm $d_s$	Screwtype metric $\varnothing$ mm $d_s$	Box content	Outer carton	Quantity per pallet
1000040	4	20	2.2-3	-	100	3600	216000
1000050	5	25	2.6-4	M3	100	3600	216000
<sup>3)</sup> 1000060	6	30	3.5-5	M4	100	3600	216000
1000070	7	35	4.5-5	M4	100	3600	216000
<sup>3)</sup> 1000080	8	40	4.5-6	M5	100	3600	216000
1000100	10	50	6-8	M6	50	1800	108000
1000120	12	60	8-10	M8	25	900	54000
1000140	14	70	10-12	M10	20	720	43200
1000150	15	75	10-12	M10	10	360	21600
1000160	16	80	12-14	M12	10	360	21600
1000200	20	90	14-16	M14	5	180	10800

<sup>3)</sup> For use with TR Toproc Spacer Screw

## MN Nylon Plug



Article code	Plug and drill $\varnothing$ mm $d_{nom} = d_0$	Length mm L	Screwtype wood/chipboard $\varnothing$ mm $d_s$	Screwtype metric $\varnothing$ mm $d_s$	Unit content	Quantity per pallet
1380032	5	25	2.6-4	M3	4000	320000
1380033	6	30	3.5-5	M4	3000	240000
1380034	8	40	4.5-6	M5	1300	104000
1380035	10	50	6-8	M6	700	56000

## MN Nylon Plug in Mini-Box, bulk packed



30 × 20 × 12.5 cm



Article code	Plug and drill $\varnothing$ mm $d_{nom} = d_0$	Length mm L	Screwtype wood/chipboard $\varnothing$ mm $d_s$	Screwtype metric $\varnothing$ mm $d_s$	Box content	Unit content	Quantity per pallet
1000041	4	20	2.2-3	-	100	5600	134400
1000051	5	25	2.6-4	M3	100	5600	134400
1000061	6	30	3.5-5	M4	100	5600	134400
1000071	7	35	4.5-5	M4	100	2800	67200
1000081	8	40	4.5-6	M5	100	2800	67200
1000101	10	50	6-8	M6	50	1400	33600
1000121	12	60	8-10	M8	25	700	16800
1000141	14	70	10-12	M10	20	560	13440
1000151	15	75	10-12	M10	10	280	6720
1000161	16	80	12-14	M12	10	280	6720
1000201	20	90	14-16	M14	5	140	3360

## MN Nylon Plug in Maxi-Box



40 × 30 × 23.5 cm

